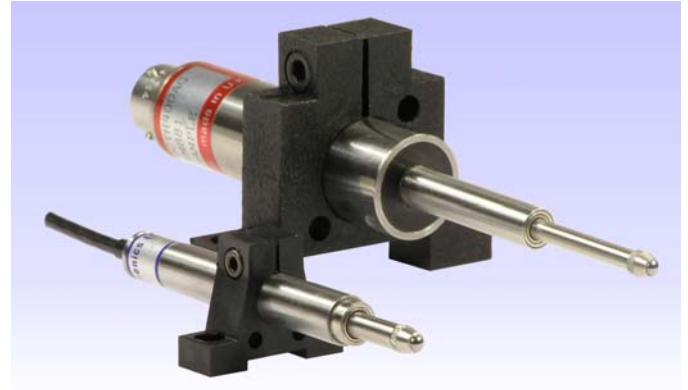


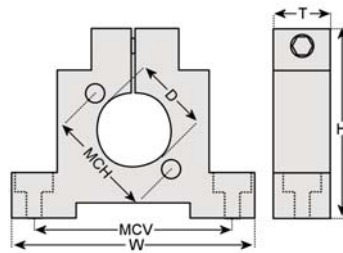
## Mounting Block

Our mounting block offers a means of supporting our transducers. We suggest that at least 2 are used per transducer and for longer stroke units 3 or 4.

For very high accuracy or physically demanding applications, you may wish to use metal mounting blocks.



**MB01**

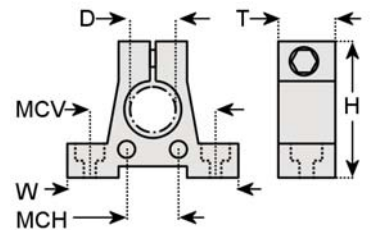


D	20.6mm
W	64mm
H	50mm
T	13mm
MCV	52mm
MCH	30mm

Major construction material  
Operating temperature range

Glass filled nylon  
-20°C to 110°C (200°C For short periods)

**MB02**



D	9.5mm or 8mm
W	30mm
H	24mm
T	10mm
MCV	23mm
MCH	10mm

Major construction material  
Operating temperature range

Glass filled nylon  
-20°C to 110°C (200°C For short periods)

All dimensions and specifications are nominal.

Due to our policy of on-going development, specifications may change without notice. Any modification may affect some or all of the specifications for our equipment.

USA & Canada  
RDP Electrosense  
2216 Pottstown Pike  
Pottstown, PA 19465  
USA  
Tel: 610-469-0850  
Tel: 800-334-5838  
Fax: 610-469-0852  
Email: info@rdpe.com

Rest of the world  
RDP Electronics Ltd  
Grove Street, Heath Town  
Wolverhampton, West Midlands, WV10 0PY  
United Kingdom

Tel: +44 1902 457512  
Fax: +44 1902 452000  
Email: sales@rdpe.com  
URL: www.rdpe.com