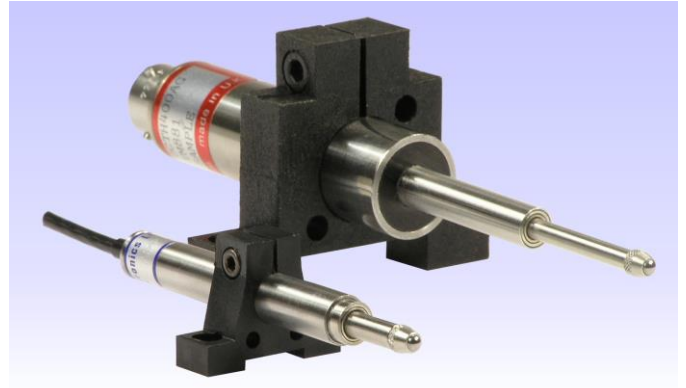


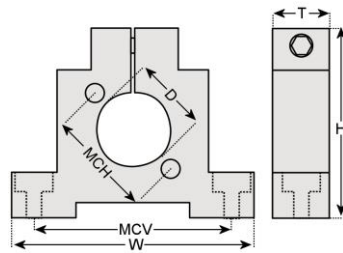
Mounting Block

Our mounting block offers a means of supporting our transducers. We suggest that at least 2 are used per transducer and for longer stroke units 3 or 4.

For very high accuracy or physically demanding applications, you may wish to use metal mounting blocks.



MB01

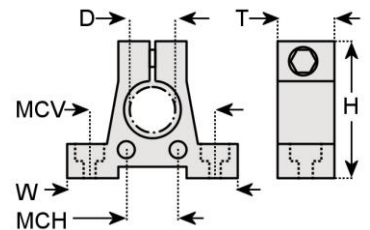


| | |
|-----|--------|
| D | 0.811" |
| W | 2.5" |
| H | 2.0" |
| T | 0.5" |
| MCV | 2.0" |
| MCH | 1.2" |

Major construction material
Operating temperature range

Glass filled nylon
-4°F to 230°F (392°F For short periods)

MB02



| | |
|-----|--------------|
| D | 0.4" or 0.3" |
| W | 1.2" |
| H | 0.9" |
| T | 0.4" |
| MCV | 0.9" |
| MCH | 0.4" |

Major construction material
Operating temperature range

Glass filled nylon
-4°F to 230°F (392°F For short periods)

All dimensions and specifications are nominal.

Due to our policy of on-going development, specifications may change without notice. Any modification may affect some or all of the specifications for our equipment.

RDP Electrosense
2216 Pottstown Pike
Pottstown, PA 19465
USA
Tel: 610-469-0850
Tel: 800-334-5838
Fax: 610-469-0852
Email: info@rdpe.com