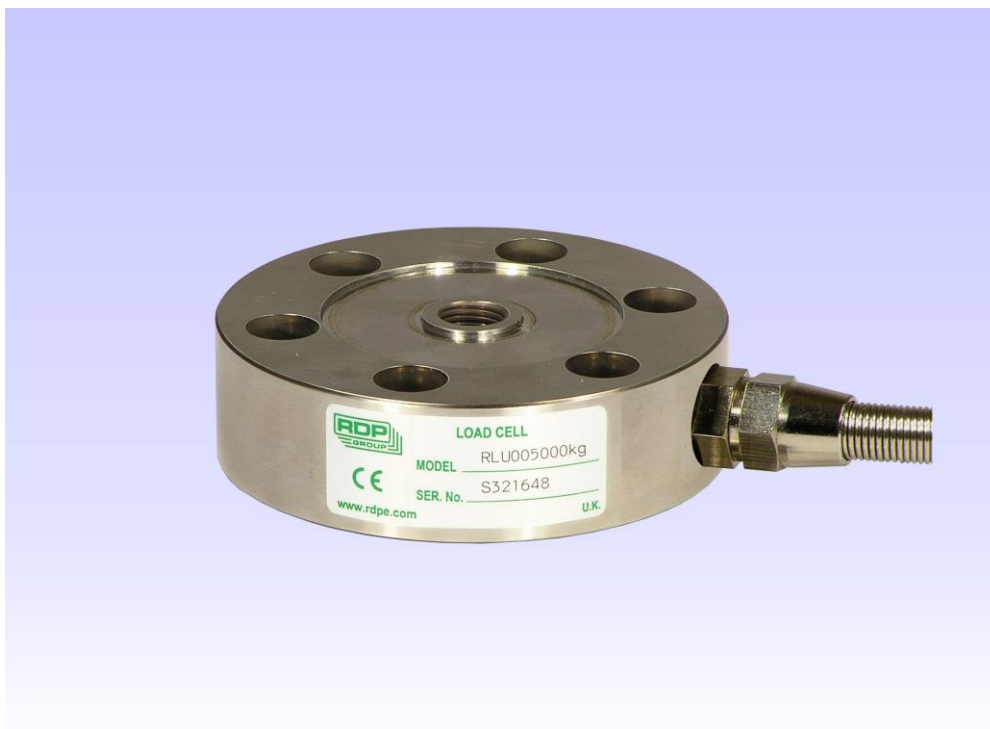


## Model RLU Tension/Compression Load Cell (Universal Load Cell)

- Low cost
- Very high accuracy
- Infinite resolution

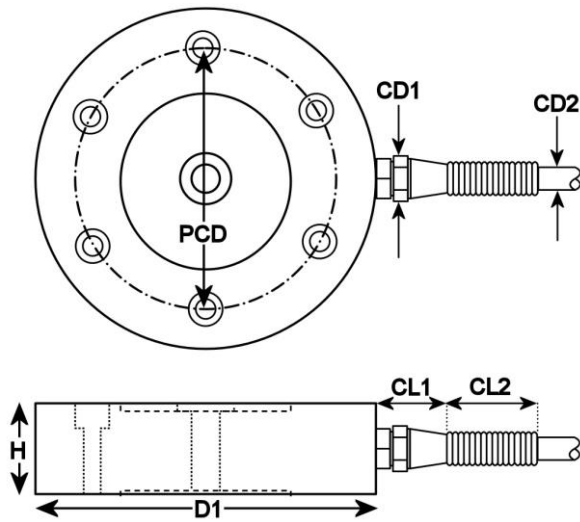


A load cell or force sensor is a device which converts load or force into an electrical signal.

A load cell should be mounted on a hard, flat surface. Tension/compression load cells measure the force applied to the centre threads of the load cell.

Care should be taken to ensure that the load sensor is not exposed to load or force in excess of its capability. The range of tension/compression load cell (universal load cell) selected should therefore be appropriate for the maximum force (including transient forces) that can be applied to it.

This series of transducer is a strain gauge type transducer and has a mV output which may require an amplifier. We can offer a variety of high quality, low noise and high precision strain gauge amplifiers.



CD1= 0.5"  
 CD2= 0.20" ±0.01"  
 CL1= 0.9"  
 CL2= 1.1"

Type	Range	D1	H	PCD	Top (Drilled for cap-head screw)	Centre thread
RLU00250	±250kgf (±551lbs)	2.95"	0.98"	2.24"	6 X M6x1	M10x1.5
RLU00500	±500kgf (±1.1klbs)	2.95"	0.98"	2.24"	6 X M6x1	M10x1.5
RLU01000	±1000kgf (±2.2klbs)	3.54"	0.98"	2.60"	6 X M8x1.25	M12x1.75
RLU02500	±2500kgf (±5.5klbs)	3.54"	0.98"	2.60"	6 X M8x1.25	M12x1.75
RLU05000	±5000kgf (±11klbs)	5.51"	1.77"	4.53"	8 X M10x1.5	M24x3.0
RLU10000	±10000kgf (±22klbs)	5.98"	1.77"	4.88"	8 X M12x1.75	M36x4.0

Specification	
Excitation/supply (acceptable)	0 to 15V
Excitation/supply (calibrated)	10V
Output	2mV/V ±10%
Zero balance	2% F.S.
Bridge resistance	350/700Ohms nominal
Linearity error	±0.03% F.S.
Hysteresis	±0.03% F.S.
Repeatability	±0.03% F.S.
Resolution	Infinite
Temperature coefficient (zero)	±0.001% F.S. /°F (typical)
Temperature coefficient (span)	±0.001% F.S. /°F (typical)
Operating temperature range	-4°F to 140°F
Compensated temperature range	14°F to 104°F
Ingress protection (IP)	65
Over-range capacity	50%
Major construction material	Steel
Electrical termination	9.8ft (integral cable)

All dimensions and specifications are nominal.

Due to our policy of on-going development, specifications may change without notice. Any modification may affect some or all of the specifications for our equipment.

RDP Electrosense  
 2216 Pottstown Pike  
 Pottstown, PA 19465  
 USA  
 Tel: 610-469-0850  
 Tel: 800-334-5838  
 Fax: 610-469-0852  
 Email: info@rdpe.com