

## Model RLW Industrial Weighing Compression Load Cell

- Very high accuracy
- Infinite resolution
- Low cost

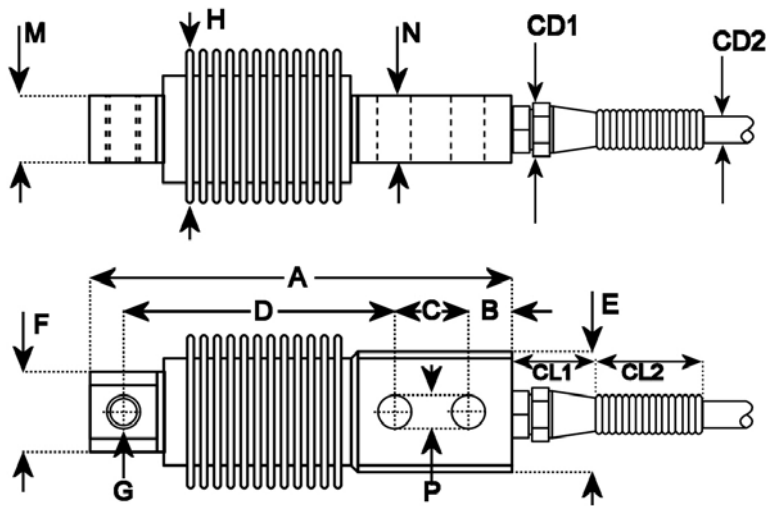


A load cell or force sensor is a device which converts load or force into an electrical signal.

This series of compression load cell is bolted down using the two mounting holes and the force applied to the threaded hole.

Care should be taken to ensure that the load sensor is not exposed to load or force in excess of its capability. The range of compression load cell selected should therefore be appropriate for the maximum force (including transient forces) that can be applied to it.

This series of transducer is a strain gauge type transducer and has a mV output which may require an amplifier. We can offer a variety of high quality, low noise and high precision strain gauge amplifiers.



CD1= 0.5"  
 CD2= 0.20"  
 CL1= 0.9"  
 CL2= 1.1"

| Type    | Range             | A     | B     | C     | D     | E     | F     | G   | H     | M     | N     | P     |
|---------|-------------------|-------|-------|-------|-------|-------|-------|-----|-------|-------|-------|-------|
| RLW0010 | 10kgf (22lbs)     | 4.72" | 0.39" | 0.71" | 3.23" | 1.42" | 1.00" | M8  | 1.77" | 0.79" | 0.79" | 0.33" |
| RLW0025 | 25kgf (55lbs)     | 4.72" | 0.39" | 0.71" | 3.23" | 1.42" | 1.00" | M8  | 1.77" | 0.79" | 0.79" | 0.33" |
| RLW0050 | 50kgf (110lbs)    | 4.72" | 0.39" | 0.71" | 3.23" | 1.42" | 1.00" | M8  | 1.77" | 0.79" | 0.79" | 0.33" |
| RLW0100 | 100kgf (221lbs)   | 4.72" | 0.39" | 0.71" | 3.23" | 1.42" | 1.00" | M8  | 1.77" | 0.79" | 0.79" | 0.33" |
| RLW0250 | 250kgf (551lbs)   | 4.72" | 0.39" | 0.71" | 3.23" | 1.42" | 1.00" | M8  | 1.77" | 0.79" | 0.79" | 0.33" |
| RLW0500 | 500kgf (1.1klbs)  | 8.27" | 0.55" | 1.57" | 5.24" | 2.36" | 1.46" | M12 | 2.36" | 0.98" | 1.42" | 0.51" |
| RLW1000 | 1000kgf (2.2klbs) | 8.27" | 0.55" | 1.57" | 5.24" | 2.36" | 1.46" | M12 | 2.36" | 0.98" | 1.42" | 0.51" |
| RLW1500 | 1500kgf (3.3klbs) | 8.27" | 0.55" | 1.57" | 5.24" | 2.36" | 1.46" | M12 | 2.36" | 0.98" | 1.42" | 0.51" |

| Specification                  |                            |
|--------------------------------|----------------------------|
| Excitation/supply (acceptable) | 0 to 15V                   |
| Excitation/supply (calibrated) | 10V                        |
| Output                         | 2mV/V ±10%                 |
| Zero balance                   | 2% F.S.                    |
| Bridge resistance              | 350 Ohms                   |
| Linearity error                | ±0.03% F.S.                |
| Hysteresis                     | ±0.03% F.S.                |
| Repeatability                  | ±0.03% F.S.                |
| Resolution                     | Infinite                   |
| Temperature coefficient (zero) | ±0.002% F.S. /°F (typical) |
| Temperature coefficient (span) | ±0.002% F.S. /°F (typical) |
| Operating temperature range    | -4°F to 140°F              |
| Compensated temperature range  | 14°F to 104°F              |
| Ingress protection (IP)        | 67                         |
| Over-range capacity            | 50%                        |
| Major construction material    | Steel                      |
| Electrical termination         | 9.8ft (integral cable)     |

All dimensions and specifications are nominal.

Due to our policy of on-going development, specifications may change without notice. Any modification may affect some or all of the specifications for our equipment.

RDP Electrosense  
 2216 Pottstown Pike  
 Pottstown, PA 19465  
 USA  
 Tel: 610-469-0850  
 Tel: 800-334-5838  
 Fax: 610-469-0852  
 Email: info@rdpe.com