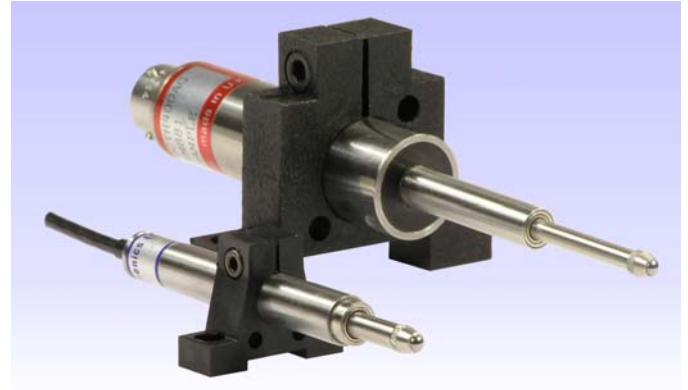


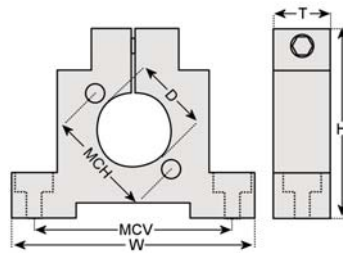
## Mounting Block

Our mounting block offers a means of supporting our transducers. We suggest that at least 2 are used per transducer and for longer stroke units 3 or 4.

For very high accuracy or physically demanding applications, you may wish to use metal mounting blocks.



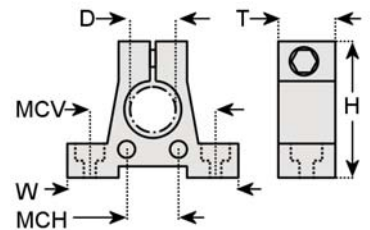
**MB01**



D	20,6mm
W	64mm
H	50mm
T	13mm
MCV	52mm
MCH	30mm

Major construction material  
Operating temperature range  
Glass filled nylon  
-20°C to 110°C (200°C For short periods)

**MB02**



D	9,5mm or 8mm
W	30mm
H	24mm
T	10mm
MCV	23mm
MCH	10mm

Major construction material  
Operating temperature range  
Glass filled nylon  
-20°C to 110°C (200°C For short periods)

All dimensions and specifications are nominal.

Due to our policy of on-going development, specifications may change without notice. Any modification may affect some or all of the specifications for our equipment.

Manufacturer  
RDP Electronics Ltd  
Grove Street, Heath Town  
Wolverhampton, West Midlands, WV10 0PY  
United Kingdom  
Tel: +44 1902 457512  
Fax: +44 1902 452000  
Email: sales@rdpe.com  
URL: www.rdpe.com

Distributor  
Transducer Technology  
PO Box 13592, Northmead  
Benoni, 1511, South Africa  
Tel: +27 11 425 2094  
Fax: +27 11 425 3359  
Email: sales@transducers.co.za