

Model RLW Industrial Weighing Compression Load Cell

- Very high accuracy
- Infinite resolution
- Low cost

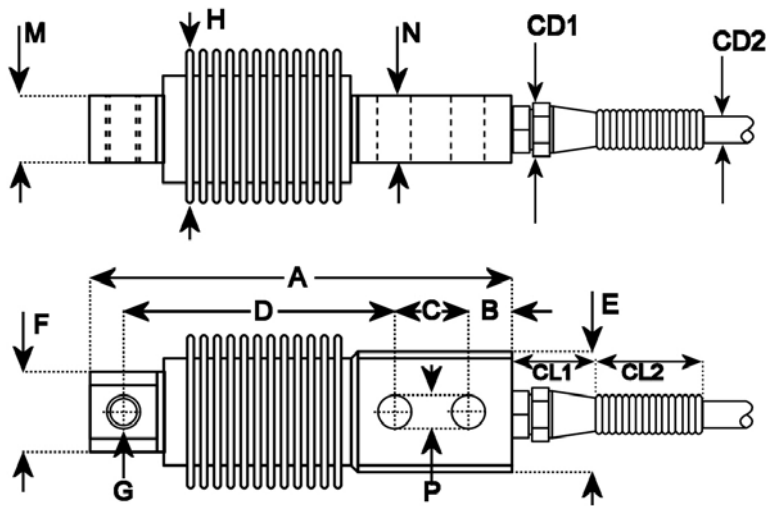


A load cell or force sensor is a device which converts load or force into an electrical signal.

This series of compression load cell is bolted down using the two mounting holes and the force applied to the threaded hole.

Care should be taken to ensure that the load sensor is not exposed to load or force in excess of its capability. The range of compression load cell selected should therefore be appropriate for the maximum force (including transient forces) that can be applied to it.

This series of transducer is a strain gauge type transducer and has a mV output which may require an amplifier. We can offer a variety of high quality, low noise and high precision strain gauge amplifiers.



CD1= 13,6mm
 CD2= 5,05mm
 CL1= 22mm
 CL2= 27mm

Type	Range	A	B	C	D	E	F	G	H	M	N	P
RLW0010	10kgf (98N)	120mm	10mm	18mm	82mm	36mm	25,5mm	M8	45mm	20mm	20mm	8,5mm
RLW0025	25kgf (245N)	120mm	10mm	18mm	82mm	36mm	25,5mm	M8	45mm	20mm	20mm	8,5mm
RLW0050	50kgf (491N)	120mm	10mm	18mm	82mm	36mm	25,5mm	M8	45mm	20mm	20mm	8,5mm
RLW0100	100kgf (981N)	120mm	10mm	18mm	82mm	36mm	25,5mm	M8	45mm	20mm	20mm	8,5mm
RLW0250	250kgf (2,5kN)	120mm	10mm	18mm	82mm	36mm	25,5mm	M8	45mm	20mm	20mm	8,5mm
RLW0500	500kgf (4,9kN)	210mm	14mm	40mm	133mm	60mm	37,0mm	M12	60mm	25mm	36mm	13,0mm
RLW1000	1000kgf (9,8kN)	210mm	14mm	40mm	133mm	60mm	37,0mm	M12	60mm	25mm	36mm	13,0mm
RLW1500	1500kgf (14,7kN)	210mm	14mm	40mm	133mm	60mm	37,0mm	M12	60mm	25mm	36mm	13,0mm

Specification	
Excitation/supply (acceptable)	0 to 15V
Excitation/supply (calibrated)	10V
Output	2mV/V \pm 10%
Zero balance	2% F.S.
Bridge resistance	350 Ohms
Linearity error	\pm 0,03% F.S.
Hysteresis	\pm 0,03% F.S.
Repeatability	\pm 0,03% F.S.
Resolution	Infinite
Temperature coefficient (zero)	\pm 0,003% F.S. / $^{\circ}$ C (typical)
Temperature coefficient (span)	\pm 0,003% F.S. / $^{\circ}$ C (typical)
Operating temperature range	-20 $^{\circ}$ C to 60 $^{\circ}$ C
Compensated temperature range	-10 $^{\circ}$ C to 40 $^{\circ}$ C
Ingress protection (IP)	67
Over-range capacity	50%
Major construction material	Steel
Electrical termination	3m (integral cable)

All dimensions and specifications are nominal.

Due to our policy of on-going development, specifications may change without notice. Any modification may affect some or all of the specifications for our equipment.

Manufacturer
 RDP Electronics Ltd
 Grove Street, Heath Town
 Wolverhampton, West Midlands, WV10 0PY
 United Kingdom
 Tel: +44 1902 457512
 Fax: +44 1902 452000
 Email: sales@rdpe.com
 URL: www.rdpe.com

Distributor
 Transducer Technology
 PO Box 13592, Northmead
 Benoni, 1511, South Africa
 Tel: +27 11 425 2094
 Fax: +27 11 425 3359
 Email: sales@transducers.co.za