

Model RLW Industrial Weighing Compression Load Cell

- Low cost
- Very high accuracy
- Infinite resolution

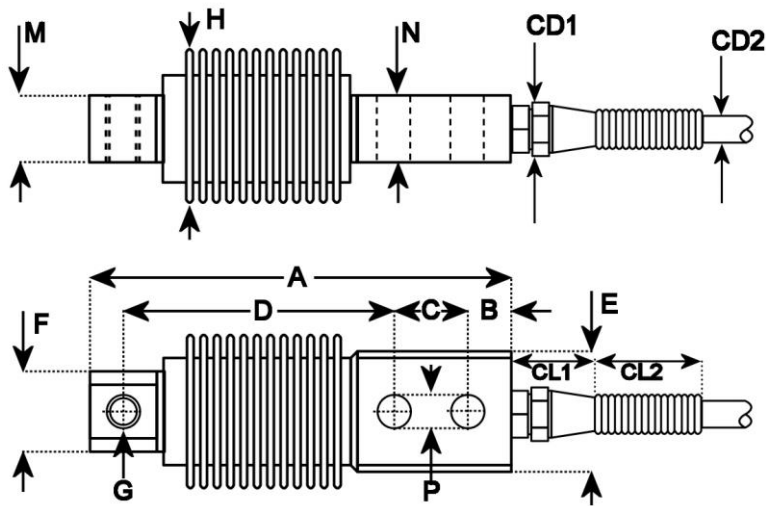


A load cell or force sensor is a device which converts load or force into an electrical signal.

This series of compression load cell is bolted down using the two mounting holes and the force applied to the threaded hole.

Care should be taken to ensure that the load sensor is not exposed to load or force in excess of its capability. The range of compression load cell selected should therefore be appropriate for the maximum force (including transient forces) that can be applied to it.

This series of transducer is a strain gauge type transducer and has a mV output which may require an amplifier. We can offer a variety of high quality, low noise and high precision strain gauge amplifiers.



CD1= 0.5"
 CD2= 0.20"
 CL1= 0.9"
 CL2= 1.1"

Type	Range	A	B	C	D	E	F	G	H	M	N	P
RLW0010	10kgf (22lbs)	4.72"	0.39"	0.71"	3.23"	1.42"	1.00"	M8	1.77"	0.79"	0.79"	0.33"
RLW0025	25kgf (55lbs)	4.72"	0.39"	0.71"	3.23"	1.42"	1.00"	M8	1.77"	0.79"	0.79"	0.33"
RLW0050	50kgf (110lbs)	4.72"	0.39"	0.71"	3.23"	1.42"	1.00"	M8	1.77"	0.79"	0.79"	0.33"
RLW0100	100kgf (221lbs)	4.72"	0.39"	0.71"	3.23"	1.42"	1.00"	M8	1.77"	0.79"	0.79"	0.33"
RLW0250	250kgf (551lbs)	4.72"	0.39"	0.71"	3.23"	1.42"	1.00"	M8	1.77"	0.79"	0.79"	0.33"
RLW0500	500kgf (1.1klbs)	8.27"	0.55"	1.57"	5.24"	2.36"	1.46"	M12	2.36"	0.98"	1.42"	0.51"
RLW1000	1000kgf (2.2klbs)	8.27"	0.55"	1.57"	5.24"	2.36"	1.46"	M12	2.36"	0.98"	1.42"	0.51"
RLW1500	1500kgf (3.3klbs)	8.27"	0.55"	1.57"	5.24"	2.36"	1.46"	M12	2.36"	0.98"	1.42"	0.51"

Specification	
Excitation/supply (acceptable)	0 to 15V
Excitation/supply (calibrated)	10V
Output	2mV/V \pm 10%
Zero balance	2% F.S.
Bridge resistance	350 Ohms
Linearity error	\pm 0.03% F.S.
Hysteresis	\pm 0.03% F.S.
Repeatability	\pm 0.03% F.S.
Resolution	Infinite
Temperature coefficient (zero)	\pm 0.002% F.S. / $^{\circ}$ F (typical)
Temperature coefficient (span)	\pm 0.002% F.S. / $^{\circ}$ F (typical)
Operating temperature range	-4 $^{\circ}$ F to 140 $^{\circ}$ F
Compensated temperature range	14 $^{\circ}$ F to 104 $^{\circ}$ F
Ingress protection (IP)	67
Over-range capacity	50%
Major construction material	Steel
Electrical termination	9.8ft (integral cable)

All dimensions and specifications are nominal.

Due to our policy of on-going development, specifications may change without notice. Any modification may affect some or all of the specifications for our equipment.

RDP Electrosense
 2216 Pottstown Pike
 Pottstown, PA 19465
 USA
 Tel: 610-469-0850
 Tel: 800-334-5838
 Fax: 610-469-0852
 Email: info@rdpe.com